



# CANNING

BEVERAGE SOLUTIONS FROM WILD GOOSE





Wild Goose Filling's origins stem from our obsession with the customer experience: a harmony of innovative engineering, manufacturing excellence and trust that we will be here for our Flock of customers today and in the years to come.

Because packaging days shouldn't suck.

**BEER**



**HARD SELTZER**



**CIDER**



**COFFEE**



**WINE**



**TEA**



**READY TO DRINK**



**KOMBUCHA**



**SPIRITS**



**MEAD**



**JUICE**



**CANNABIS DRINKS**



**SODA**



**WATER**



## **INNOVATIVE ENGINEERING**

As the craft beverage industries evolve and pursue new advancements, Wild Goose Filling innovates. With patented seaming and filling technology alongside a philosophy of progress, our experienced team of engineers continually develops our systems, providing the best innovations and modular options to grow as you grow.

## **INTUITIVE SUPPORT**

Accessible, knowledgeable, real. We took a page from our customers who model true customer service in their breweries. Like our machines, Wild Goose service is built around the customer experience, supporting your goals now and in the future.

## **WORLDWIDE FLOCK**

Under our wing, customers of every size, shape and style around the world use Wild Goose systems. Together, the “Flock” drives us. We are committed to your success, and every step you take along the way.

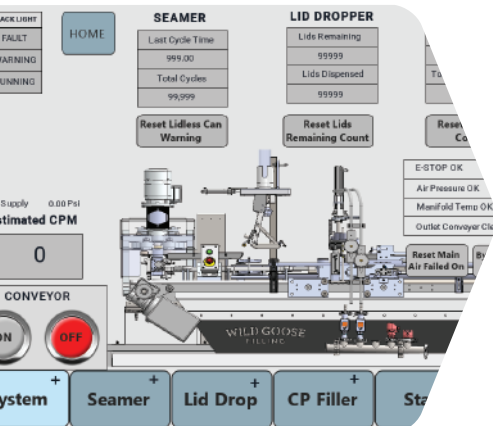


# JOIN THE FLOCK

Wild Goose Filling's industry-leading systems are built to your specifications using precision engineering supported by renowned customer support. An unmatched emphasis on quality control ensures the superior taste, integrity and freshness of your products.

## REVOLUTIONARY SEAMING

- Exceptional seam integrity from the fastest seamer in its class
- Patented pneumatically-actuated and cam-driven seamer design allows for precise adjustments and repeatability
- Precision cams deliver consistent seaming force can after can, avoiding the erratic results of air cylinder systems reliant solely on air
- Same robustness and durability as an industrial rotary system, with lower cost and minimal maintenance
- Engineered for carbonated and nitro-assisted still canning applications
- Seamer parts machined with extremely tight tolerances for low deviation rate



## USER-FRIENDLY TOUCHSCREEN TECHNOLOGY

- Highly intuitive and user-friendly full-color touchscreen interface (HMI) backed by Wild Goose Filling software
- Custom save-by-style settings
- Alerts operator to machine prompts quickly and clearly, with automatic maintenance prompts at various cycle times
- Remote diagnostic assistance capabilities and software updates via Ethernet

## PRECISION FILLING METHODS

Proprietary Wild Goose fill technologies deliver fast, consistent fills for any beverage while minimizing dissolved oxygen to protect your beverage quality. Wild Goose's range of atmospheric Evolution Series™ and Gosling™ systems and dual counter pressure + atmospheric Wild Goose Fusion™ systems give you the right filling options for your business. Minimal moving part construction means low maintenance with easy cleaning and high temperature sanitation.

- Proprietary **atmospheric filling technology** with pneumatically-actuated CO2 purge and two-stage fill action gives unparalleled control over flow rate, fill volume and foam control on each individual fill head
- Two-stage fill process is easily controlled through HMI using timing-based filling or optional flowmeters to monitor and indicate volume
- Patented line restriction provides consistent fill levels
- Proprietary **counter pressure filling technology** accommodates a broad range of beverage styles and carbonation levels
- Wild Goose Fusion™ dual counter pressure and atmospheric fill modes flexibly handle virtually any beverage challenge
- Individual-can pressurization technology – no conventional pressure bowl required – supports fast fill cycles through variable product conditions

## ACCURATE LID PLACEMENT

- Lid detection in chute facilitates accurate dispensing, placement, seating and retention to minimize dissolved oxygen pickup
- Uniquely engineered lid placement with actuator to transfer each individual lid into the holding chute for smooth placement at various speeds
- Intelligent lid detection sensor confirms lids are present prior to seaming



## HIGH-TEMPERATURE SANITATION

- Allows thorough, safe clean-in-place processes above temperatures proven to eliminate even the most heat-resistant organisms
- Minimizes potential cross-contamination when transitioning between multiple yeast strains and beverage types
- Reduces the time needed to reach desired sanitation levels
- Protects operator safety and long-term component integrity

# CANNING SYSTEMS

		EVOLUTION SERIES™				
	GOSLING™	WG1	WG2	WG3	WG4	WG5
Fill Heads	1	1	2	3	4	5
Speed Up To <i>(based on 12 oz/355 mL can at optimal conditions)</i>	12 cans/min 720 cans/hr 30 cases/hr 2.2 bbl/hr 68 gal/hr 2.6 hL/hr 0.26 m³/h 258 L/hr	15 cans/min 900 cans/hr 38 cases/hr 2.7 bbl/hr 84 gal/hr 3.2 hL/hr 0.32 m³/h 320 L/hr	30 cans/min 1800 cans/hr 75 cases/hr 5.4 bbl/hr 168 gal/hr 6.3 hL/hr 0.63 m³/h 630 L/hr	35 cans/min 2100 cans/hr 88 cases/hr 6.3 bbl/hr 196 gal/hr 7.5 hL/hr 0.75 m³/h 750 L/hr	40 cans/min 2400 cans/hr 100 cases/hr 7.2 bbl/hr 225 gal/hr 8.5 hL/hr 0.85 m³/h 850 L/hr	50 cans/min 3000 cans/hr 125 cases/hr 9 bbl/hr 281 gal/hr 10.6 hL/hr 1.06 m³/h 1060 L/hr
Can Sizes*	Range	Range	Range	Range	Range	Range
Upgradeable (Field Upgrade)	X	✓	✓	✓	✓	X
Mobile Configuration	✓	✓	✓	✓	✓	✓
European CE Configuration	✓	✓	✓	✓	✓	✓
European CE Mobile Configuration	✓	✓	✓	✓	✓	✓

## OPTIONAL ACCESSORY COMPATIBILITY

DO Buster™ CO <sub>2</sub> Tunnel	✓	Included	Included	Included	Included	Included
QuickChange™ Options	✓	✓	✓	✓	✓	✓
Rinse Tunnel & Air Nozzles	✓	✓	✓	✓	✓	✓
Inlet Pressure & Temp Monitors	✓	✓	✓	✓	✓	✓
Flow Meters	✓	✓	✓	✓	✓	✓
Dual-Stage Flow Mode	✓	Included	Included	Included	Included	Included
Liquid Nitrogen Dosing	✓	✓	✓	✓	✓	✓
Accumulation Pack-Out Conveyor	✓	✓	✓	✓	✓	✓
Manual Whale Tail Infeed Tray	X	✓	✓	✓	✓	✓
Blue Lift	✓	✓	✓	✓	✓	✓
Spare Parts Kit	✓	✓	✓	✓	✓	✓
SPA Treatment (Service Partnership Agreement)	✓	✓	✓	✓	✓	✓

\* Wild Goose base models accommodate a range of interchangeable can heights with same body diameter and lid. Optional QuickChange™ System offers extended range of can heights, body diameters and lid types.

# CANNING SYSTEMS

EVOLUTION SERIES™		WILD GOOSE FUSION™		
WG8	WG10	FUSION 2	FUSION 4	FUSION 6
8	10	2	4	6
90 cans/min 5400 cans/hr 225 cases/hr 16.3 bbl/hr 506 gal/hr 19.2 hL/hr 1.92 m³/h 1916 L/hr	100 cans/min 6000 cans/hr 250 cases/hr 18.1 bbl/hr 562 gal/hr 21.2 hL/hr 2.12 m³/h 2129 L/hr	15 cans/min 900 cans/hr 38 cases/hr 2.7 bbl/hr 84 gal/hr 3.2 hL/hr 0.32 m³/h 320 L/hr	30 cans/min 1800 cans/hr 75 cases/hr 5.4 bbl/hr 168 gal/hr 6.3 hL/hr 0.63 m³/h 630 L/hr	40 cans/min 2400 cans/hr 100 cases/hr 7.3 bbl/hr 225 gal/hr 8.5 hL/hr 0.85 m³/h 852 L/hr
Range	Range	Range	Range	Range
✓	✗	✓	✓	✗
✗	✗	✓	✓	✓
✗	✗	✓	✓	✓
✗	✗	✓	✓	✓

## OPTIONAL ACCESSORY COMPATIBILITY

Included	Included	Included	Included	Included
✗	✗	✓	✓	✓
✓	✓	✓	✓	✓
✓	✓	Included	Included	Included
Included	Included	✓	✓	✓
Included	Included	Included	Included	Included
✓	✓	✓	✓	✓
✗	✗	✓	✓	✓
✗	✗	✓	✓	✓
✓	✓	✓	✓	✓
✓	✓	✓	✓	✓
✓	✓	✓	✓	✓

Wild Goose Filling systems have been custom engineered to accommodate nearly every can size and lid type. Inquire about customization if your desired can size is not listed.

5.5 oz    8 oz sleek    12 oz    16 oz    24 oz    200 mL slim    330 mL    375 mL    500 mL  
8 oz    10 oz sleek    12 oz sleek    19.2 oz    187 mL slim    250 mL slim    355 mL    440 mL



# GOSLING™

Designed for the growing craft beverage maker focused on product quality, the Gosling canning system is your entry into professional canning at an attractive price.

The Gosling delivers trusted Wild Goose consistency and ease-of-use to extend your product shelf life and save on labor.



- Package small volumes easily from keg, tank and more
- Protect your carry-out quality and flavor
- Test your market in small batches



SPEED UP TO  
**12**  
CANS PER MINUTE

**Purge & Fill Station:** Automatic  
**Can Lid Placement:** Automatic  
**Seamer Station:** Automatic

## TECHNICAL SPECIFICATIONS



**Dimensions:** 42" L x 24" W x 41"-43" H · **Deck Height:** Entry and exit height of 12"-14" above base surface

**Configuration:** Tabletop unit with adjustable leveling feet and optional mobile cart

**Weight:** 275 lb · **Power:** Single-phase 13A @ 115VAC, 50/60 Hz (single-phase 200V-240V available)

**Air:** Clean, dry compressed air required at 95-100 psi, 6.5 scfm; refrigerated air dryer and coalescing air filter rated to 0.10-0.01 micron required





## EVOLUTION SERIES™

The modular Evolution Series supports you as you take the steps from your earliest production stages to higher speed canning.

With upgradeable system options, the Evolution Series expands with you affordably and with the same exceptional quality and customer service you have come to expect from Wild Goose.



### *Growing steadily?*

Upgrade stage by stage to meet your customer demand.

### *Growing rapidly?*

Skip stages and upgrade your output all at once.

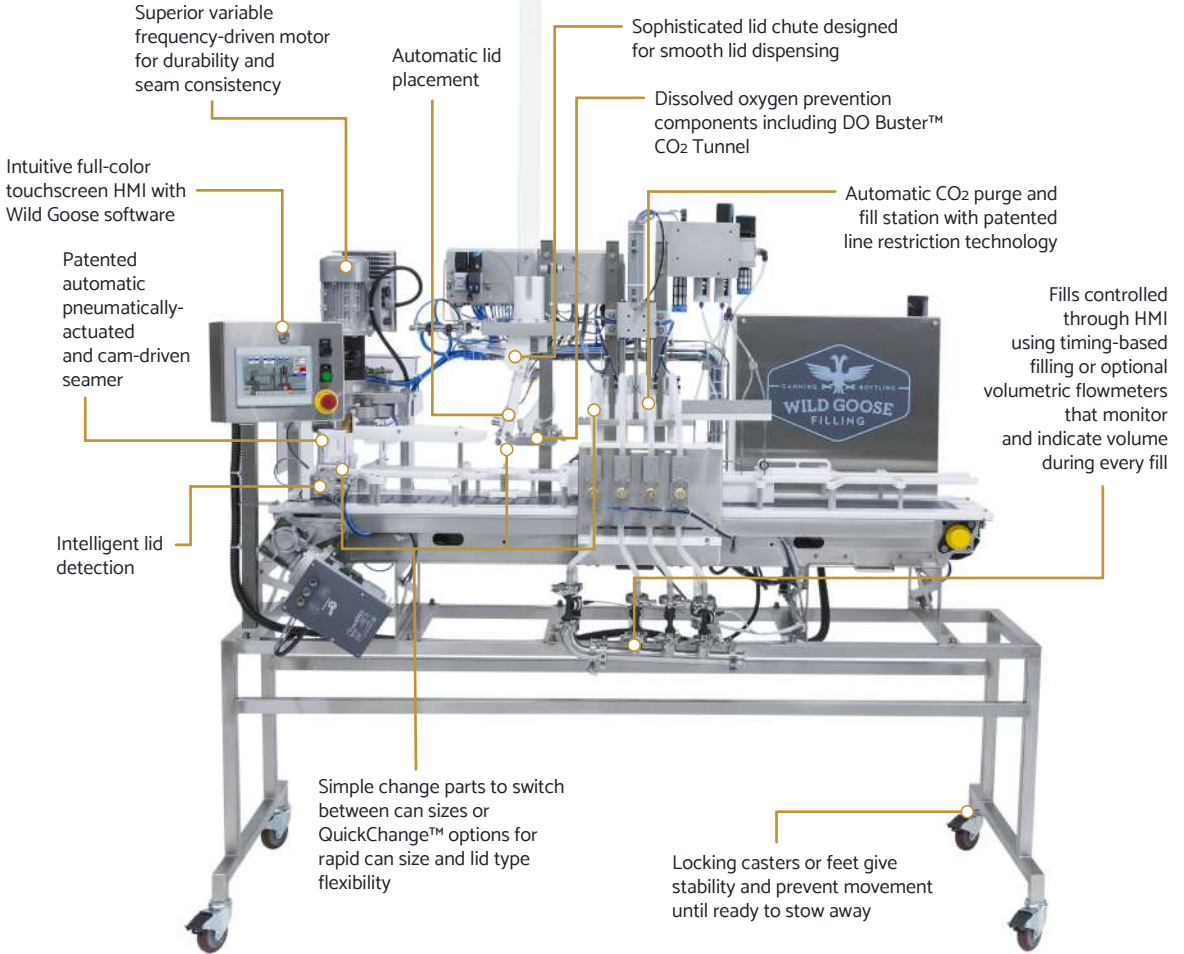
The Evolution Series expands with your demand so you can focus on crafting your best product.

# EVOLUTION SERIES™

Upgradeable 2.7 to 9 Bbl/Hr canning systems to grow as you grow

OPTIONS UP TO  
**50**  
CANS PER MINUTE

**Purge & Fill Station:** Automatic  
**Can Lid Placement:** Automatic  
**Seamer Station:** Automatic



\*WG4 system shown

## TECHNICAL SPECIFICATIONS

**Dimensions:** 88" L x 38" W x 108" H (79" H when lid tube removed) · **Deck Height:** 46" with casters; adjustable 44"-46" without casters

**Weight:** Up to 765 lb · **Power:** Single-phase 17A @ 115VAC, 50/60 Hz or single-phase 200V-240V

**Air:** Clean, dry compressed air required at 90 psi, 12.2 cfm; refrigerated air dryer and coalescing air filter rated to 0.10-0.01 micron required

# DUAL-LANE EVOLUTION SERIES™

Higher speed WG8 and WG10 systems offering superior yield and production efficiency

OPTIONS UP TO  
**100**  
CANS PER MINUTE

**Purge & Fill Station:** Automatic

**Can Lid Placement:** Automatic

**Seamer Station:** Automatic

Automatic CO<sub>2</sub> purge and fill station including eight or ten fill heads with patented line restriction technology

Dual-lane design capable of running both lanes simultaneously or one lane only

Intuitive full-color touchscreen HMI with Wild Goose software

Dissolved oxygen prevention components including DO Buster™ CO<sub>2</sub> Tunnels

Sophisticated lid chutes with low lid refill indicators designed for smooth lid dispensing

Automatic dual lid placement

Intelligent lid detection

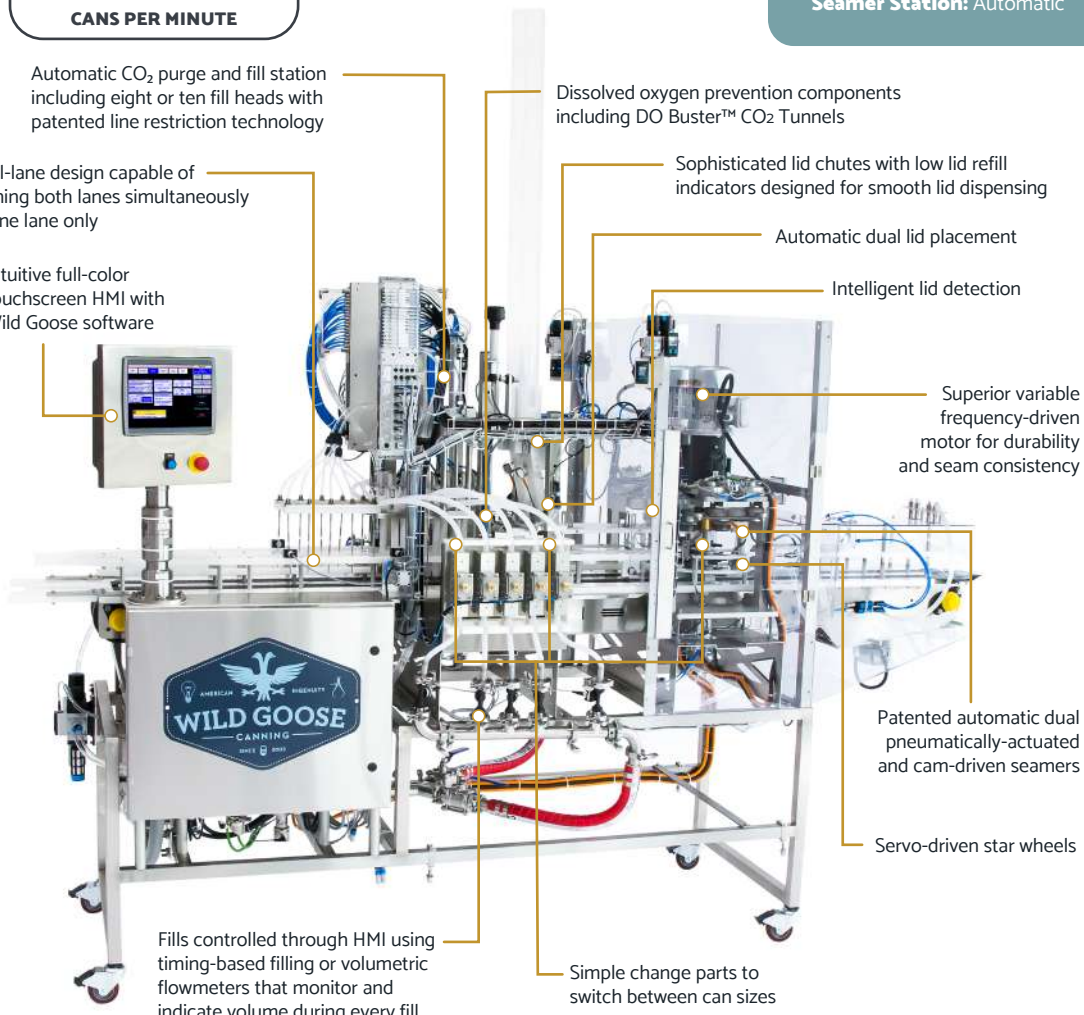
Superior variable frequency-driven motor for durability and seam consistency

Patented automatic dual pneumatically-actuated and cam-driven seamers

Servo-driven star wheels

Fills controlled through HMI using timing-based filling or volumetric flowmeters that monitor and indicate volume during every fill

Simple change parts to switch between can sizes



*\*WG10 system shown*

## TECHNICAL SPECIFICATIONS

**Dimensions:** 130.5" L x 41" W x 109" H (90" H when lid tubes removed) • **Deck Height:** Adjustable 44"-46" installed on feet

**Weight:** 1,400 lb • **Power:** Three-phase (200V-240V) 18A @ 208VAC, 50/60 Hz; knockout provided for your electrician to wire

**Air:** Clean, dry compressed air required at 90 psi, 22.9 cfm; refrigerated air dryer and coalescing air filter rated to 0.10-0.01 micron required

**Depalletization:** Requires use of depalletizing equipment



## WILD GOOSE FUSION™

The only canning system that provides you with both counter pressure and atmospheric filling.

The Wild Goose Fusion™ Counter Pressure + Atmospheric Canning System provides accurate, repeatable fills across beverage types, styles and conditions. Innovating a new era of canning, the Wild Goose Fusion combines the best of pioneering Wild Goose fast-pour innovations with the versatile bandwidth of counter pressure filling for unmatched canning performance.

Wild Goose's Fusion counter pressure system technology does not require a conventional pressure bowl or drum found on older style counter pressure machines.

This design upholds your packaging quality while giving you a light-weight, agile canning system with:

- Fast fill cycles
- Low dissolved oxygen
- Safe operation
- Minimal cleaning time
- Low operating costs



The Wild Goose Fusion handles your:

- Beverage varieties
- Carbonation levels
- Product pressures
- Product temperatures

*Upgrade when you are ready for more speed.*

The Wild Goose Fusion expands from 2 to 4 to 6 fill heads on the same footprint to keep up with your increasing demand.

# WILD GOOSE FUSION™

Counter pressure + atmospheric filling for virtually all beverage conditions and styles

OPTIONS UP TO  
**40**  
CANS PER MINUTE

**Purge & Fill Station:** Automatic  
**Can Lid Placement:** Automatic  
**Seamer Station:** Automatic

The latest in Wild Goose operation, with high-resolution full-color touchscreen HMI and Wild Goose software

Superior variable frequency-driven motor for durability and seam consistency

Patented automatic pneumatically-actuated and cam-driven seamer

Intelligent lid detection

Ergonomic frame design

Locking casters or feet give stability and prevent movement until ready to stow away

Simple change parts to switch between can sizes or QuickChange™ options for rapid can size and lid type flexibility

Automatic lid placement

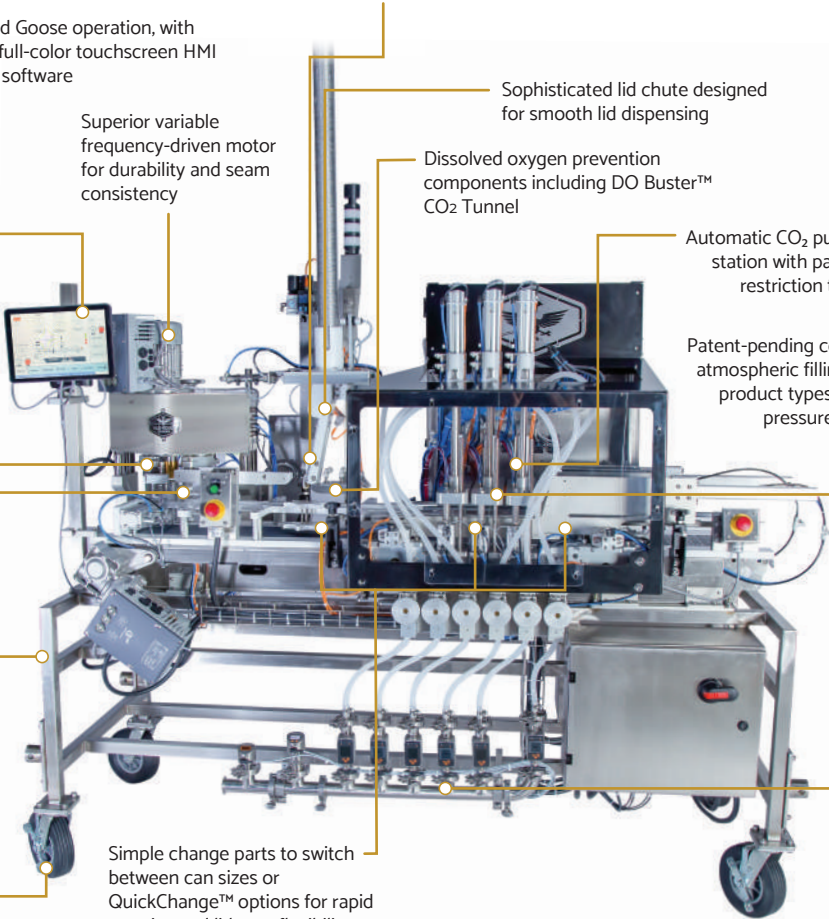
Sophisticated lid chute designed for smooth lid dispensing

Dissolved oxygen prevention components including DO Buster™ CO<sub>2</sub> Tunnel

Automatic CO<sub>2</sub> purge and fill station with patented line restriction technology

Patent-pending counter pressure and atmospheric filling to handle diverse product types, carbonation levels, pressures and temperatures

Fills controlled through HMI using timing-based filling or optional volumetric flowmeters that monitor and indicate volume during every fill



\*FU6 system shown

## TECHNICAL SPECIFICATIONS

**Dimensions:** 88" L x 38" W x 116" H (81" H when lid tube removed) · **Deck Height:** 40" with casters; adjustable 38"-42"

**Weight:** Up to 1,200 lb · **Power:** Single-phase 30A @ 230VAC, 60 Hz

**Air:** Clean, dry compressed air required at 90-100 psi, 12.2 cfm; refrigerated air dryer and coalescing air filter rated to 0.10-0.01 micron required

# EUROPEAN CONFIGURATIONS

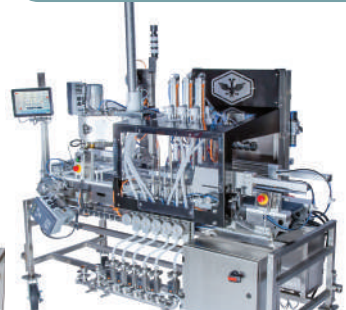


CE-certified systems with an unsurpassed compact footprint

Available for Gosling™, Single-Lane Evolution Series™ and Wild Goose Fusion™ systems

OPTIONS UP TO  
**3000**  
CANS PER HOUR

**Purge & Fill Station:** Automatic  
**Can Lid Placement:** Automatic  
**Seamer Station:** Automatic



	GOSLING™ CE	EVOLUTION SERIES™ CE	WILD GOOSE FUSION™ CE
<b>Cans per Hour</b>	Up to 720 cph	Up to 900, 1800, 2100, 2400, 3000 cph	Up to 900, 1800, 2400 cph
<b>Fill Heads</b>	1	1, 2, 3, 4, 5	2, 4, 6
<b>Dimensions</b>	107 cm L x 61 cm W x 104-109 cm H	246 cm L x 107 cm W x 290 cm H (203 cm H when lid tube removed)	224 cm L x 97 cm W x 295 cm H (205 cm H when lid tube removed)
<b>Deck Height</b>	Entry and exit height of 30.5-35.5 cm above base surface	117 cm with casters; adjustable 112 cm - 117 cm without casters	101.5 cm with casters; adjustable 96.5 cm - 106.5 cm
<b>Power</b>	Single-phase 200V-240V	Single-phase 12A @ 230VAC, 50/60 Hz; knockout provided for your electrician to wire	Single-phase 12A @ 230VAC, 60 Hz; knockout provided for your electrician to wire
<b>Air</b>	Clean, dry compressed air required at 6.5-7 bar, 185 L/min  Refrigerated air dryer and coalescing air filter rated to 0.10-0.01 micron required	Clean, dry compressed air required at 6.2 bar, 20.7 m³/h  Refrigerated air dryer and coalescing air filter rated to 0.10-0.01 micron required	Clean, dry compressed air required at 6.2 bar, 20.7 m³/h  Refrigerated air dryer and coalescing air filter rated to 0.10-0.01 micron required
<b>Upgradeable</b>	Not applicable	Field upgrade service available	Field upgrade service available

*Wild Goose is your local partner in Europe for beverage packaging.*

With our offices and warehouse in The Netherlands, Spain, Hungary and Italy, we are just around the corner, supporting all your packaging needs.

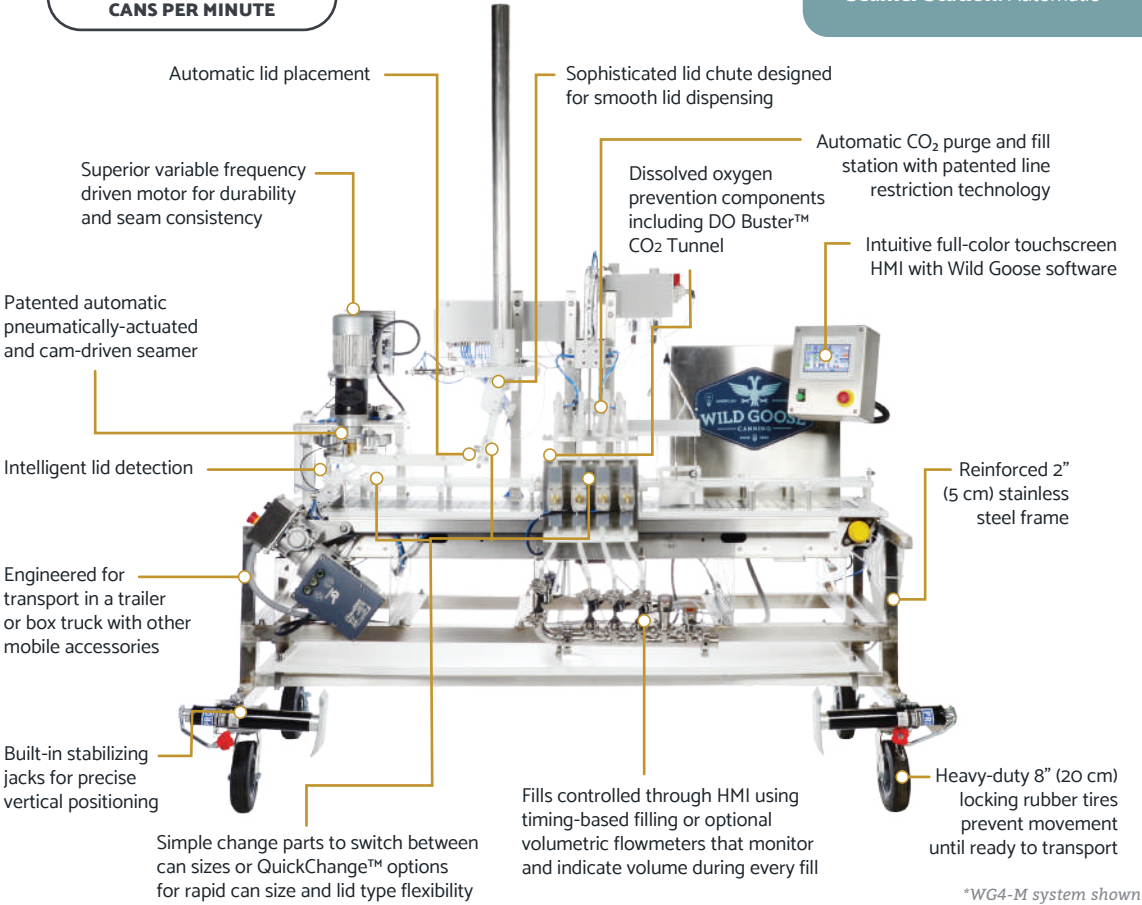
# MOBILE CONFIGURATIONS

Durable, compact mobile systems with unbeatable consistency and efficient performance

Available for Gosling™, Single-Lane Evolution Series™ and Wild Goose Fusion™ systems

OPTIONS UP TO  
**50**  
CANS PER MINUTE

**Purge & Fill Station:** Automatic  
**Can Lid Placement:** Automatic  
**Seamer Station:** Automatic



\*WG4-M system shown  
European models include additional CE guarding

## TECHNICAL SPECIFICATIONS

### MOBILE EVOLUTION SERIES

- Dimensions:** 83.5" L x 43" W x 103" H (68" H when lid tube removed)
- Deck Height:** Adjustable 36"-46" with included jack stands
- Weight:** Up to 835 lb
- Power:** Single-phase 17A @ 115VAC, 50/60 Hz (single-phase 200V-240V available)
- Air:** Clean, dry compressed air required at 90 psi, 12.2 cfm; refrigerated air dryer and coalescing air filter rated to 0.10-0.01 micron required
- Upgradeable:** Field upgrade service available

### EUROPEAN MOBILE EVOLUTION SERIES

- Dimensions:** 227 cm L x 98 cm W x 262 cm H (173 cm H when lid tube removed)
- Deck Height:** Adjustable 91 cm - 117 cm with included jack stands
- Weight:** Up to 900 kg
- Power:** Single-phase 12A @ 230VAC, 50/60 Hz; knockout provided for your electrician to wire
- Air:** Clean, dry compressed air required at 6.2 bar, 20.7 m<sup>3</sup>/h; refrigerated air dryer and coalescing air filter rated to 0.10-0.01 micron required
- Upgradeable:** Field upgrade service available

Mobile configurations also available for Gosling™ and Wild Goose Fusion™ systems. Contact us for details.



# ACCESSORY MODULES

Wild Goose offers accessories to add to your base system for improved automation, increased production and reduced labor. These modules are designed and built by Wild Goose Filling for superior quality and compatibility with Wild Goose lines.

## DO Buster™ CO<sub>2</sub> Tunnel

Dispenses uniform CO<sub>2</sub> blanket to block oxygen from entering open cans between filling and lid placement

- Minimizes surface disturbance through gentle laminar flow
- Removes large oxygen-heavy “frog-eye” bubbles to limit oxygen absorption
- Reinforces consistent foam levels to increase accuracy of fills and lid placement and ensure reliable underlid gassing conditions
- Accommodates each beverage’s foam conditions with adjustable flow rate, reducing CO<sub>2</sub> waste and maximizing operator safety



Shown in tests to help save up to 1 oz. of product per can through decreased overfill waste

COMPATIBLE WITH: ● Gosling ● Evolution Series *Included Standard* ● Dual-Lane Evolution Series *Included Standard* ● Wild Goose Fusion *Included Standard* ✓ CE

## QuickChange™ Options

Offers easy transition between can bodies and heights plus lid types and sizes for maximum packaging flexibility in under 35 minutes

- Provides industry-leading seam repeatability, with seam adjustments maintained through can height and lid size changeovers
- Minimizes changeover steps, parts and labor for simple implementation by one person in minutes
- Offers consistent fill levels and CO<sub>2</sub> purging at any can size, with filler adjustments maintained through can body changeovers



Accommodates any can body from 202 through 300 and any lid type from 200 through 209

COMPATIBLE WITH: ● Gosling ● Evolution Series ● Dual-Lane Evolution Series ● Wild Goose Fusion ✓ CE

## Rinse Tunnel & Air Nozzles

Washes away product residue and reduces moisture on finished cans before final packaging

- Three adjustable multi-focus water streams
- Three adjustable multi-focus air nozzles



COMPATIBLE WITH: ● Gosling ● Evolution Series ● Dual-Lane Evolution Series ● Wild Goose Fusion ✓ CE



# ACCESSORY MODULES

## Inlet Pressure & Temperature Monitors

Provides highly accurate real-time pressure and temperature feedback during canning so operator can quickly adjust flow rate for ideal fill levels

- Offers continuous monitoring post-tank to facilitate reliable filling conditions



COMPATIBLE WITH: ● Gosling ● Evolution Series ● Dual-Lane Evolution Series ● Wild Goose Fusion ✓ CE

## Flow Meters

Produces consistent and accurate fills regardless of fluctuating product tank pressure

- Regulates filling autonomously, without the need for operator management
- Measures product volume and controls flow in real time for precise fills



COMPATIBLE WITH: ● Gosling ● Evolution Series ● Dual-Lane Evolution Series ● Wild Goose Fusion ✓ CE  
*Included Standard*

## Accumulation Pack-Out Conveyor

Allows finished cans of any size to continuously accumulate for easier assembly into multipacks, cases or other packaging

COMPATIBLE WITH: ● Gosling ● Evolution Series  
○ Dual-Lane Evolution Series ● Wild Goose Fusion



## Manual Whale Tail Infeed Tray

Graded tray for depalletization that attaches directly to the canning system and requires a manual push of each layer of cans from a half-height pallet to feed the machine

COMPATIBLE WITH: ○ Gosling ● Evolution Series  
○ Dual-Lane Evolution Series ● Wild Goose Fusion



## Blue Lift

Lifts half-height pallets of cans for infeed to Manual Whale Tail Infeed Tray and other standard pallet infeed options

COMPATIBLE WITH: ● Gosling ● Evolution Series  
● Dual-Lane Evolution Series ● Wild Goose Fusion



## Spare Parts Kits

Wild Goose Filling systems use precision components and high-quality materials designed to withstand long-term wear and tear. In the event you require a replacement part, our Spare Parts Kits have you covered. The kits include a variety of essential components for your specific machine, including common wear parts, pneumatic cylinders and an assortment of sensors.

COMPATIBLE WITH: ● Gosling ● Evolution Series ● Dual-Lane Evolution Series ● Wild Goose Fusion ✓ CE



# SERVICE & SUPPORT

Every Wild Goose Filling system comes with comprehensive support from our dedicated team of experts. Whether you require new training, maintenance help or spare parts, experienced Wild Goose technicians are ready to assist.

## Installation & Training

Experienced technicians travel to your location to install your canning system, ensuring the machine is fully operational in your facility with your product. This onsite service includes training for your employees on all aspects of the system, including mechanical operations, machine interface functions, maintenance and best practices – translating to better production, increased part life and reduced service interruptions.

## System Manuals

Wild Goose Filling systems come with thorough document resources covering general procedures, machine operations, troubleshooting, preventative maintenance and more.

### Operational Manual

- Canning principles
- System overview
- System connections
- HMI operations
- Machine operations
- Clean-in-place (CIP)
- Testing seams
- Operating procedures
- Troubleshooting
- Preventative maintenance schedule

### Maintenance Manual

- Maintenance, preventative maintenance and troubleshooting procedures for:
  - Filler, Lid Dropper, Seamer, HMI, Conveyor
- List of faults and warnings
- Pneumatic cylinder principles

## Tool Kit

The Tool Kit accompanying each Wild Goose Filling system includes an assortment of specialized and custom tools, allowing you to fine-tune your machine for maximum quality control.

# SERVICE & SUPPORT

## Service & Support



When you purchase your canning system from Wild Goose Filling, you receive lifetime support from Wild Goose packaging and service experts. Should you need assistance, advice or additional training for new employees, our team is available for personalized support.

## Service Partnership Agreement (“SPA Treatment”)

Get peace of mind about your equipment maintenance. Wild Goose offers an easy option to schedule regular machine care from the professionals to ensure your equipment continues to provide best-in-class performance. The “SPA Treatment” provides onsite machine inspection, cleaning, calibration, software updates and wearable parts replacement by our certified Field Service Technicians.

## Parts

Wild Goose Filling systems utilize high-quality materials and precision components to ensure the system can withstand the rigors of your production environment. Occasionally a part may require replacement and you can rest assured the Wild Goose team is on call and ready to ship parts anywhere in the world to keep your system at peak performance.

## Warranty

Purchase your canning system with confidence in its continued performance. Every machine is backed by a 2-year Wild Goose warranty. You can trust that your Goose is built to last and supported by the Wild Goose guarantee.

## Purchasing

When you purchase a Wild Goose Filling system, we custom build the machine to your specifications from the ground up. Once you have completed the three basic steps to verify your supply compatibility and initiate fabrication, you will be canning on your new Wild Goose system in no time.

1. Provide your machine order requirements:
  - Can size
  - Lid type
  - Electrical supply
  - Compressed air supply
  - Double seam can reports from can manufacturer
  - Layout of space or other packaging equipment in your facility
  - Any additional information needed to customize your machine
2. Submit your signed purchase agreement
3. Send in your deposit



We offer Wild  
Goose Financing.

Contact us to learn  
more about your  
options.

Worldwide support, wherever you call home.



*Join  
the  
Flock.*



**USA Headquarters:**

633 CTC Boulevard, Suite 100  
Louisville, Colorado 80027 USA

+1 720.406.7442

Sales@WildGooseFilling.com

**European Offices:**

Alkmaar, The Netherlands

Barcelona, Spain

Trento, Italy

Budapest, Hungary

[www.WildGooseFilling.com](http://www.WildGooseFilling.com)